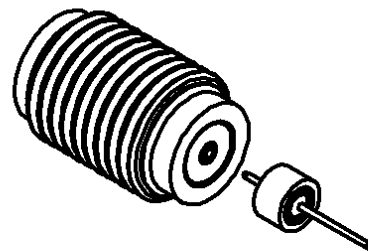
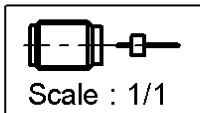
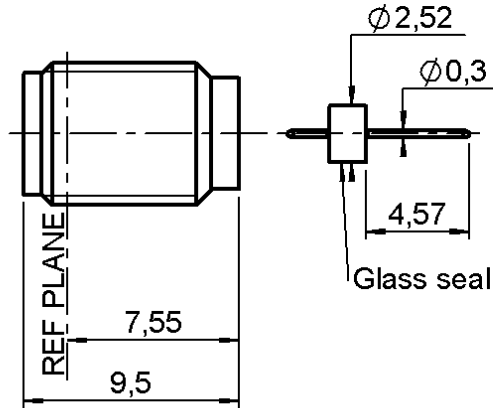


SCREW ON FEMALE RECEPTACLE

R125.638.001

HERMETIQUE - PERLE DE VERRE

Series : SMA



All dimensions are in mm.



COMPONENTS	MATERIALS	PLATINGS (μm)
BODY	STAINLESS STEEL	PASSIVATED
CENTER CONTACT	BERYLLIUM COPPER	GOLD 1.3 OVER NICKEL2
OUTER CONTACT	-	-
INSULATOR	PTFE	-
GASKET	-	-
OTHERS PARTS	DILVER P	GOLD 1.3 OVER NICKEL2
-	-	-
-	-	-

Issue : 0905 D

In the effort to improve our products, we reserve the right to make changes judged to be necessary.



SCREW ON FEMALE RECEPTACLE

R125.638.001

HERMETIQUE - PERLE DE VERRE

Series : SMA

PACKAGING

SPECIFICATION

Standard	Unit	Other
1	-	Contact us

ELECTRICAL CHARACTERISTICS

ENVIRONMENTAL

Impedance		50 Ω
Frequency		0-18 GHz
VSWR	1.06 +	0,0025 x F(GHz) Maxi
Insertion loss		0.07* √F(GHz) dB Maxi
RF leakage	- (60 - F(GHz)) dB Maxi
Voltage rating		500 Veff Maxi
Dielectric withstanding voltage		1000 Veff mini
Insulation resistance		5000 MΩ mini

Operating temperature	-65/+125 ° C
Hermetic seal	NA Atm.cm3/s
Panel leakage	NA

OTHERS CHARACTERISTICS

Assembly instruction

Others :

* Coaxial Transmission Line Only

MECHANICAL CHARACTERISTICS

Center contact retention		
Axial force – Mating end		27 N mini
Axial force – Opposite end		27 N mini
Torque		2.8 N.cm mini
Recommended torque		
Mating		NA N.cm
Panel nut		190 N.cm
Mating life		500 Cycles mini
Weight		1,7500 g

Issue : 0905 D

In the effort to improve our products, we reserve the right to make changes judged to be necessary.



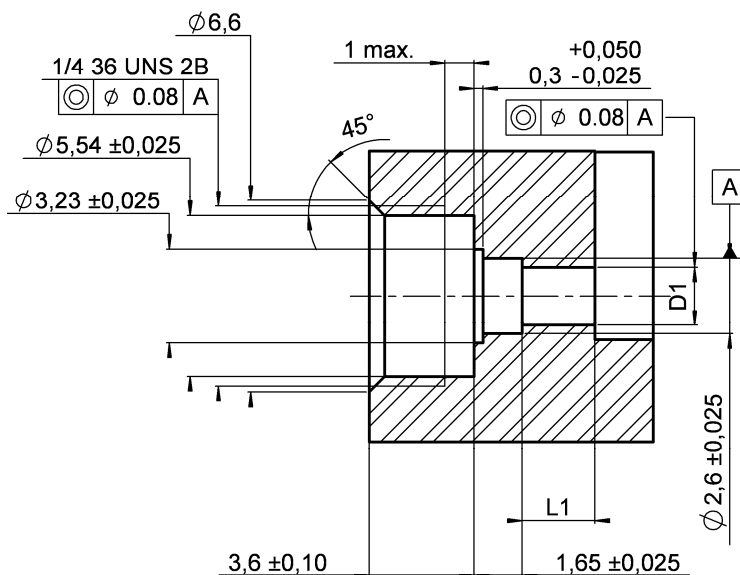
SCREW ON FEMALE RECEPTACLE

HERMETIQUE - PERLE DE VERRE

R125.638.001

Series : SMA

RECOMMENDED MOUNTING HOLE DETAIL



D1 and L1 dimensions have to be determined according to each application.

We advise of two following case : (see page 4)

-using of the R280 469 000 removable socket :

$$D1 = 2 + ou - 0.02$$

$$L1 = 2.5 + ou - 0.1$$

-the bead pin is directly welded on the track :

$$D1 = 0.70 + ou - 0.02$$

L1 = 1 to 4 according to customer's design criteria.

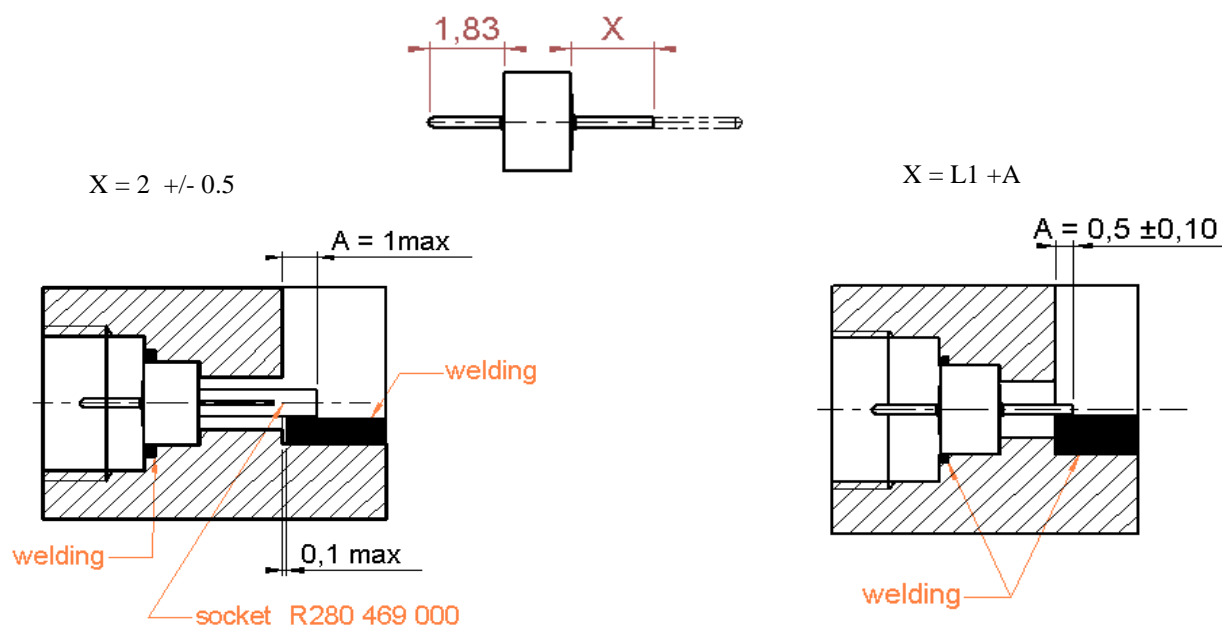
Issue : 0905 D

In the effort to improve our products, we reserve the right to make changes judged to be necessary.



SCREW ON FEMALE RECEPTACLE**HERMETIQUE - PERLE DE VERRE****R125.638.001**

Series : SMA

ASSEMBLY INSTRUCTIONS**GLASS BEAD**

- 1- Adjust X by cutting the pin if necessary.
- 2- Introduce the glass bead into its housing as here above (with the mounted socket)
- 3- Weld the ring by putting a welding wire in the groove.
- 4- Weld the pin (or socket) on the track. Beware of putting too much welding

IMPORTANT : for maximum RF characteristics the link track/pin must be as thin as possible.

We advise you to respect rigorously the A dimension, by welding accurately the bead pin directly on the track (right drawing).

CONNECTOR

-Screw the connector into the housing. Tighten it up to 190 cmN +/- 10 cmN

(use special tooling set RADIALL R282 341 010)

Issue : 0905 D

In the effort to improve our products, we reserve the right to make changes judged to be necessary.

